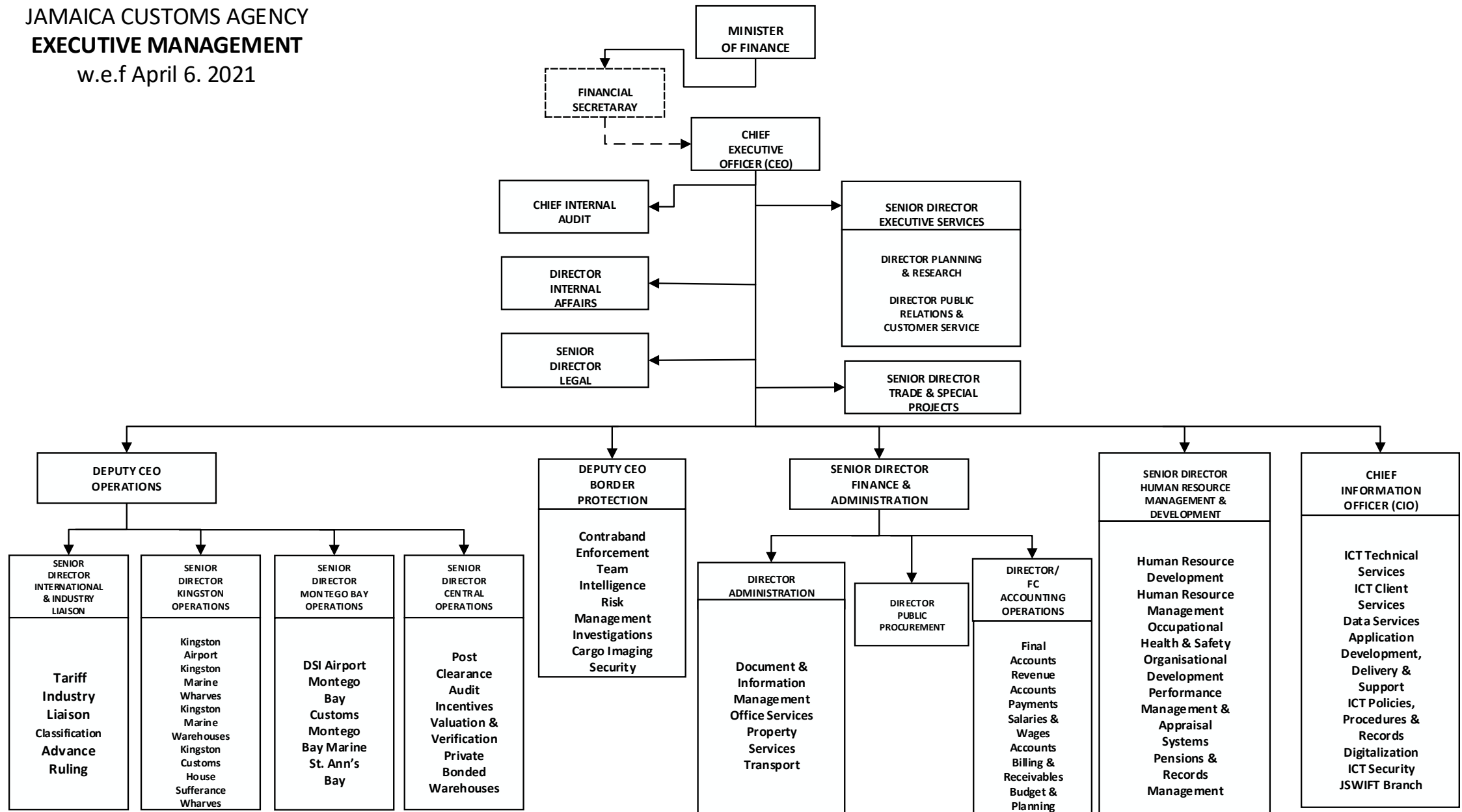




The Jamaica Customs Agency Organisational Charts

1. Appendix C - Organisation charts

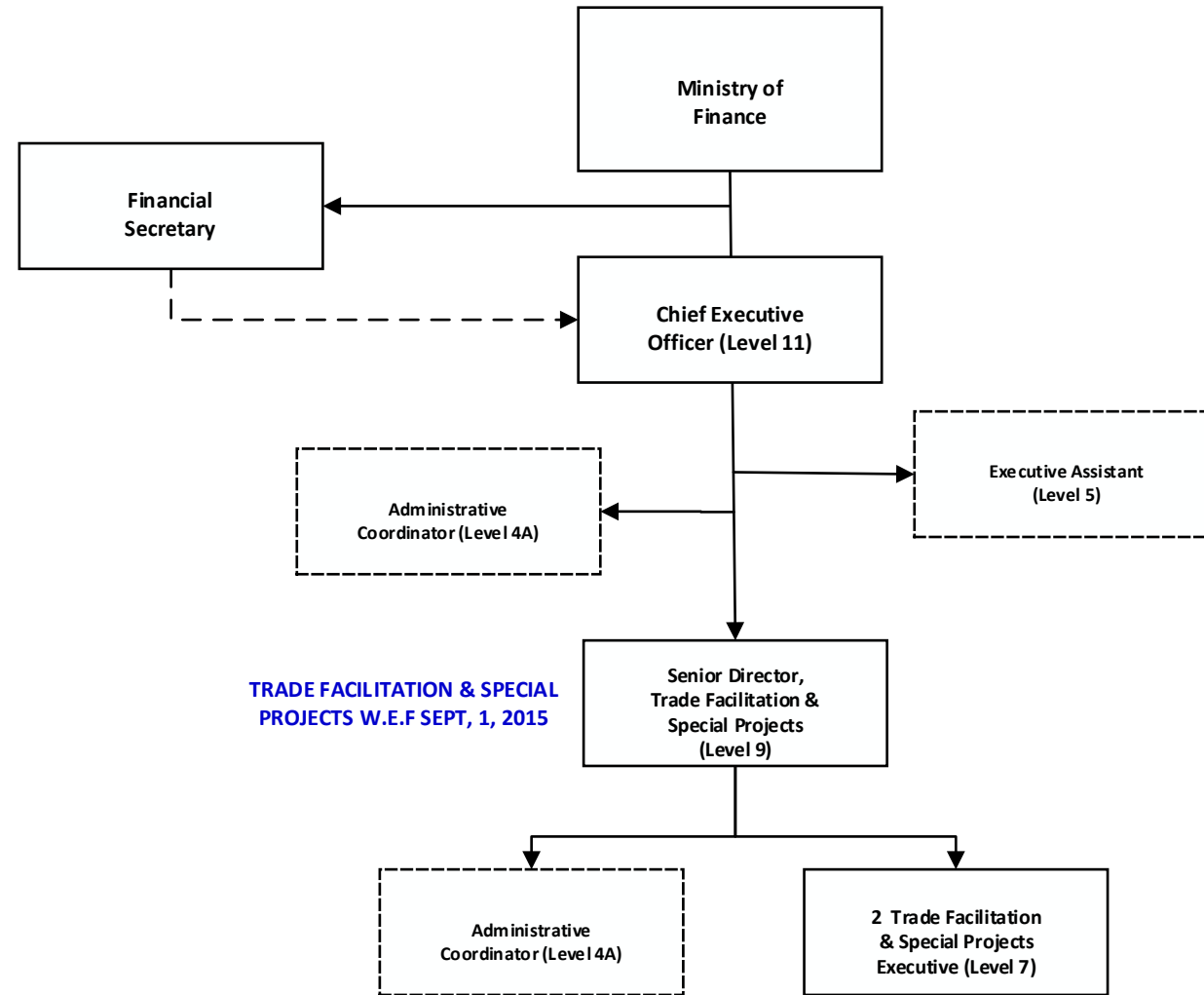
JAMAICA CUSTOMS AGENCY
EXECUTIVE MANAGEMENT
 w.e.f April 6, 2021



Revised Structure

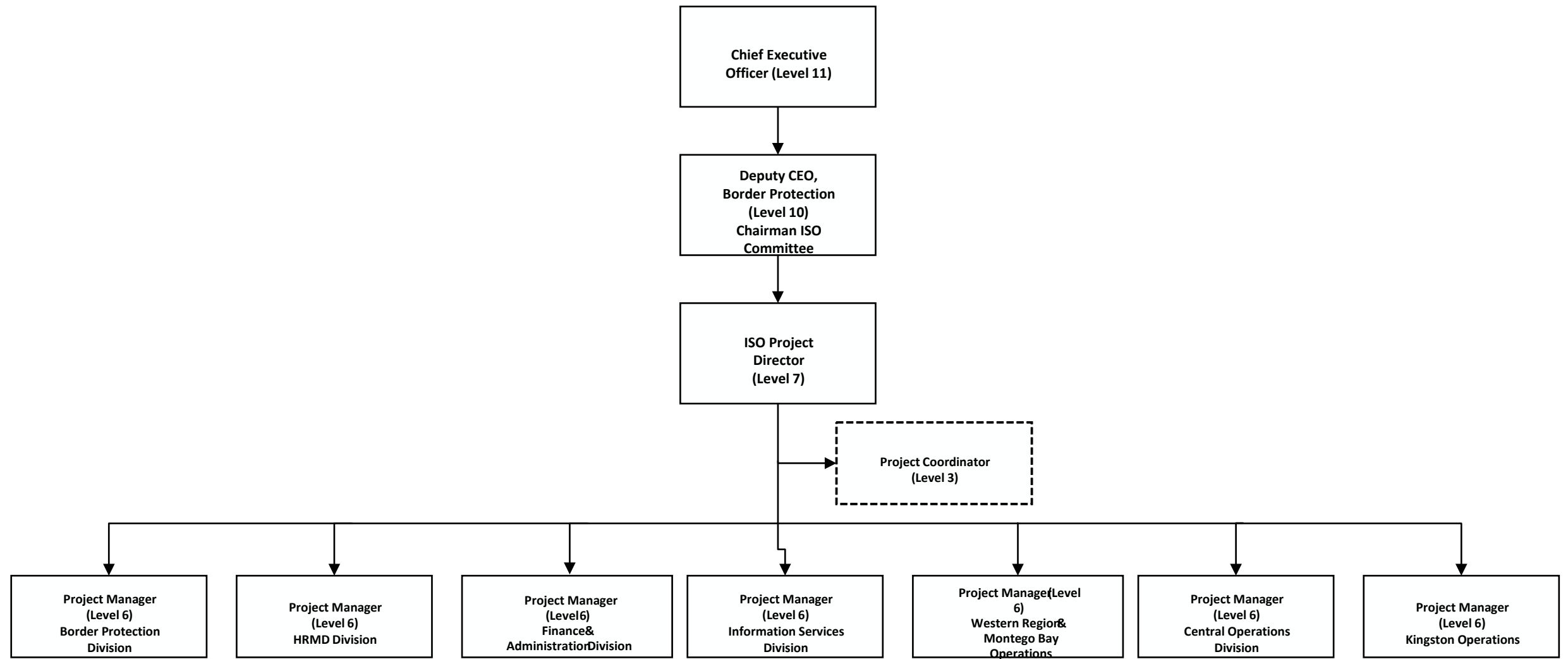
Updated May 4, 2021

JAMAICA CUSTOMS AGENCY
OFFICE OF THE CEO



**JAMAICA CUSTOMS AGENCY
ISO PROJECT TEAM**

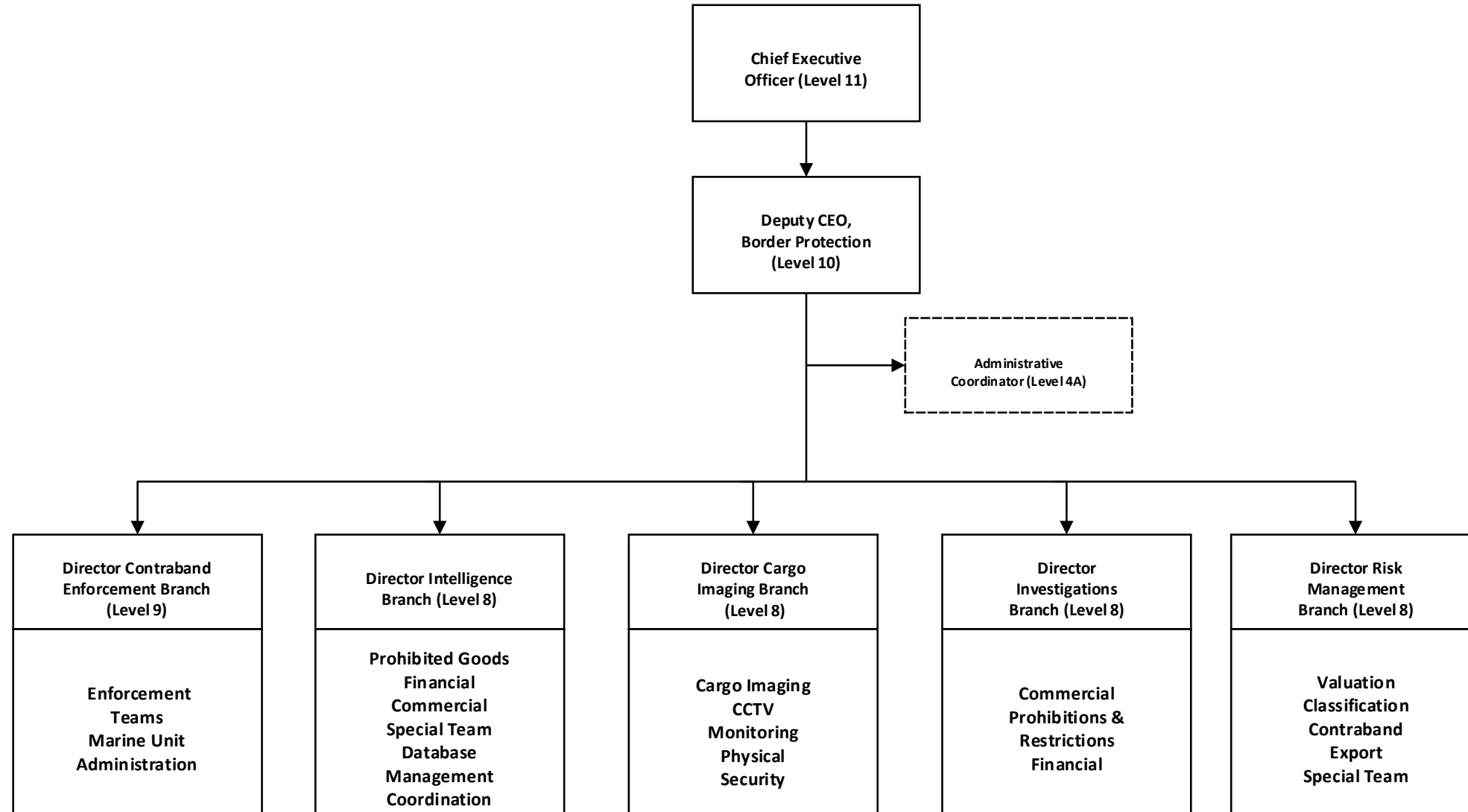
Extended for 1 year w.e.f October 5, 2020



Revised Structure

Updated May 4, 2021

**JAMAICA CUSTOMS AGENCY
BORDER PROTECTION DIVISION**



JAMAICA CUSTOMS AGENCY
BORDER PROTECTION DIVISION
 CONTRABAND ENFORCEMENT BRANCH

Chief Executive Officer
(Level 11)

Deputy CEO Border
Protection (Level 10)

Director, Contraband
Enforcement Team (Level 9)

Administrative
Officer 2 (Level 4A)

Manager
Kingston (L8)

Manager
Montego Bay (L8)

Administrative Officer 1 (L3)
Records Officer (L2)

Administrative Officer 1 (L3)
Records Officer (L2)

MARINE
OUTPOST
W.E.F SEPT, 2, 2019

SEAPORT

AIRPORT

Supervisor
(L7) Team 1

Supervisor (L7)
Team 1 & 2

Supervisor (L7)
Team 3 & 4

Supervisor (L7)
Team 5 & 6

2 Supervisors (L7)
Team 1 & 2

3 Snr.
Enforcement
Officers/
Team Leaders
(L6)

2 Snr. Enforcement
Officers/Team
Leaders (L6)

8 Enforcement
Officers (L5)

1 Records Officers
(L2)

2 Snr. Enforcement
Officers/Team
Leaders (L6)

8 Enforcement
Officers (L5)

1 Records Officers
(L2)

2 Snr. Enforcement
Officers/Team
Leaders (L6)

8 Enforcement
Officers (L5)

1 Records Officers
(L2)

2 Snr. Enforcement
Officers/Team
Leaders (L6)

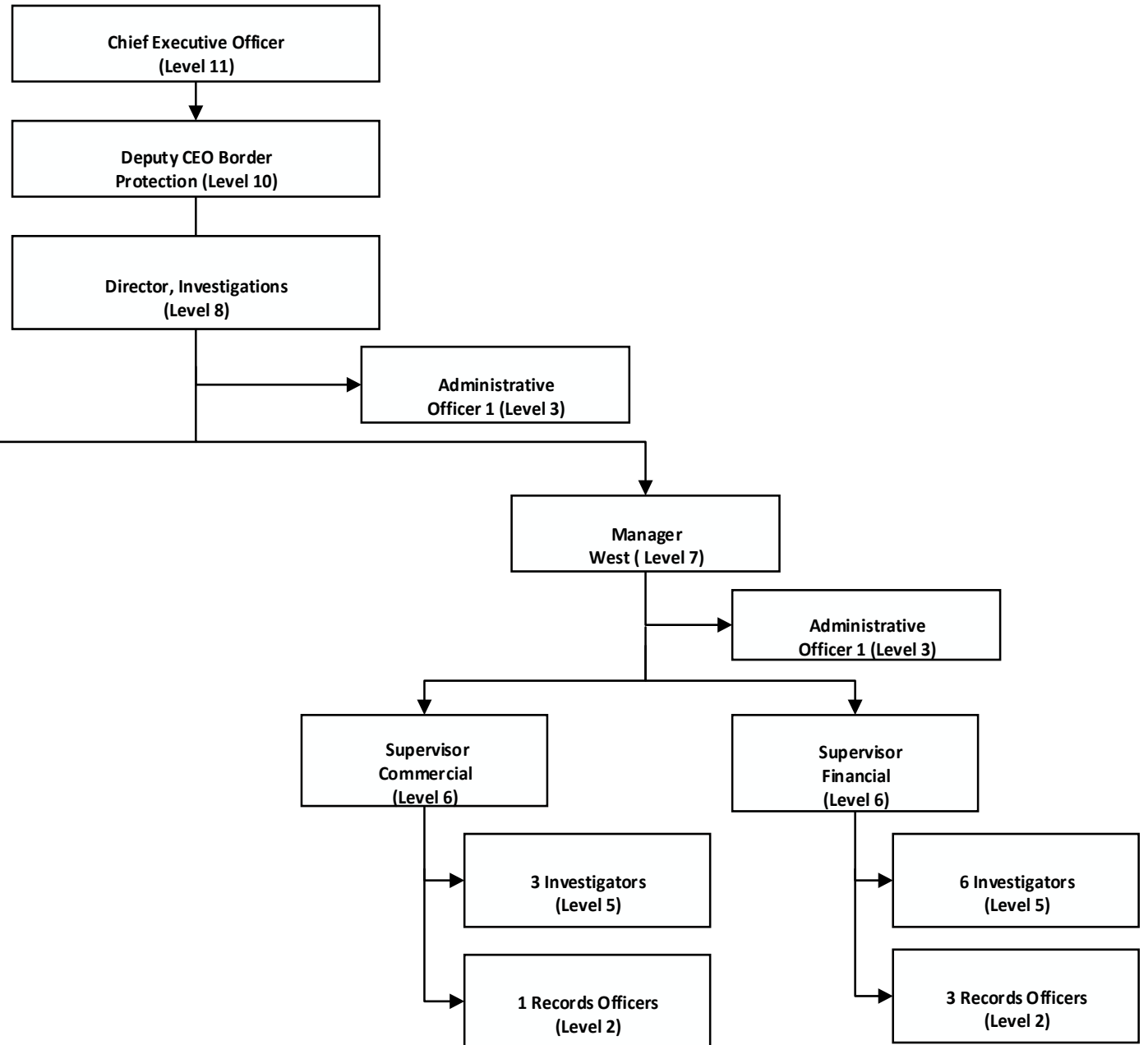
10 Enforcement
Officers (L5)

2 Records Officers
(L2)

Revised Structure

Updated May 4, 2021

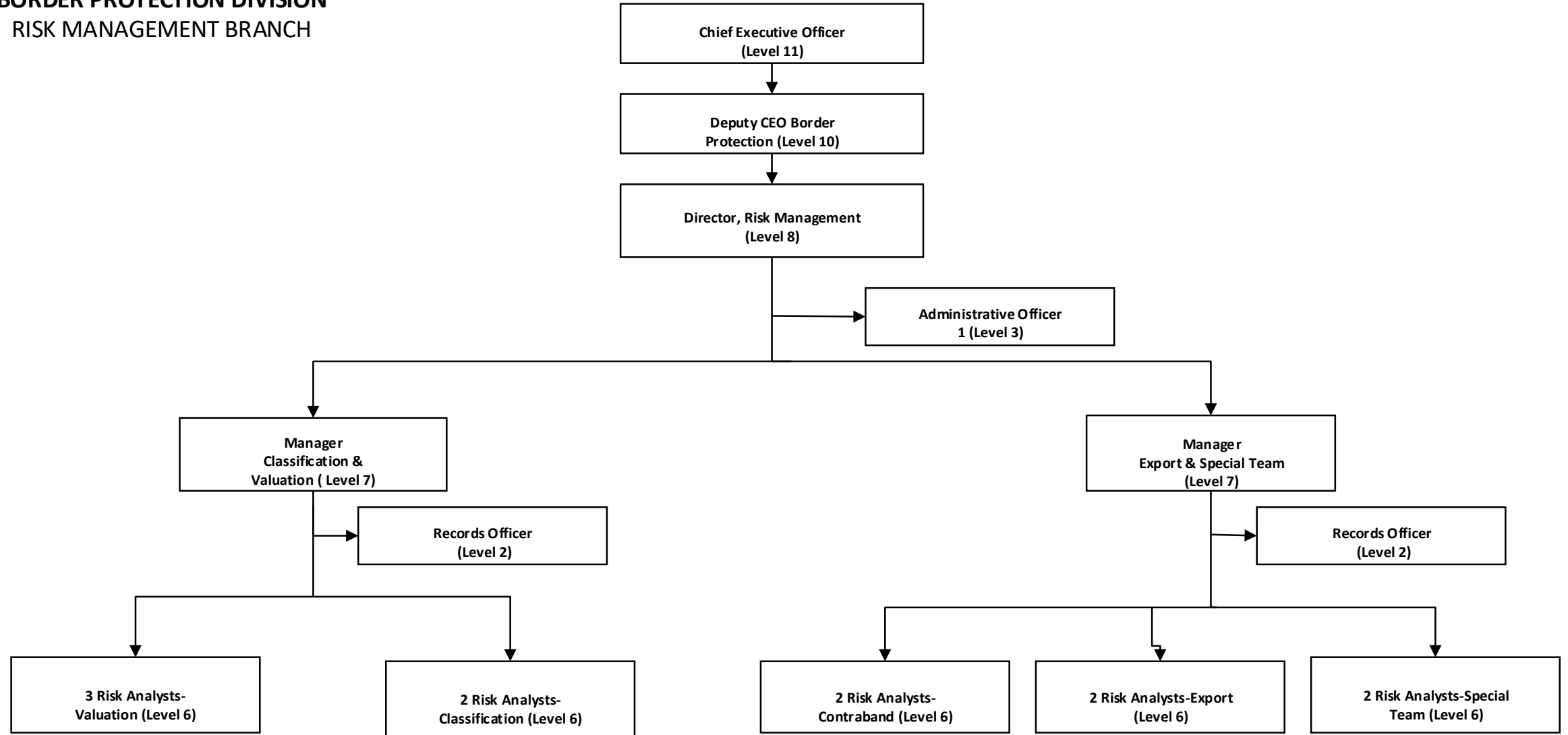
JAMAICA CUSTOMS AGENCY
BORDER PROTECTION DIVISION
INVESTIGATIONS BRANCH



Revised Structure

Updated May 4, 2021

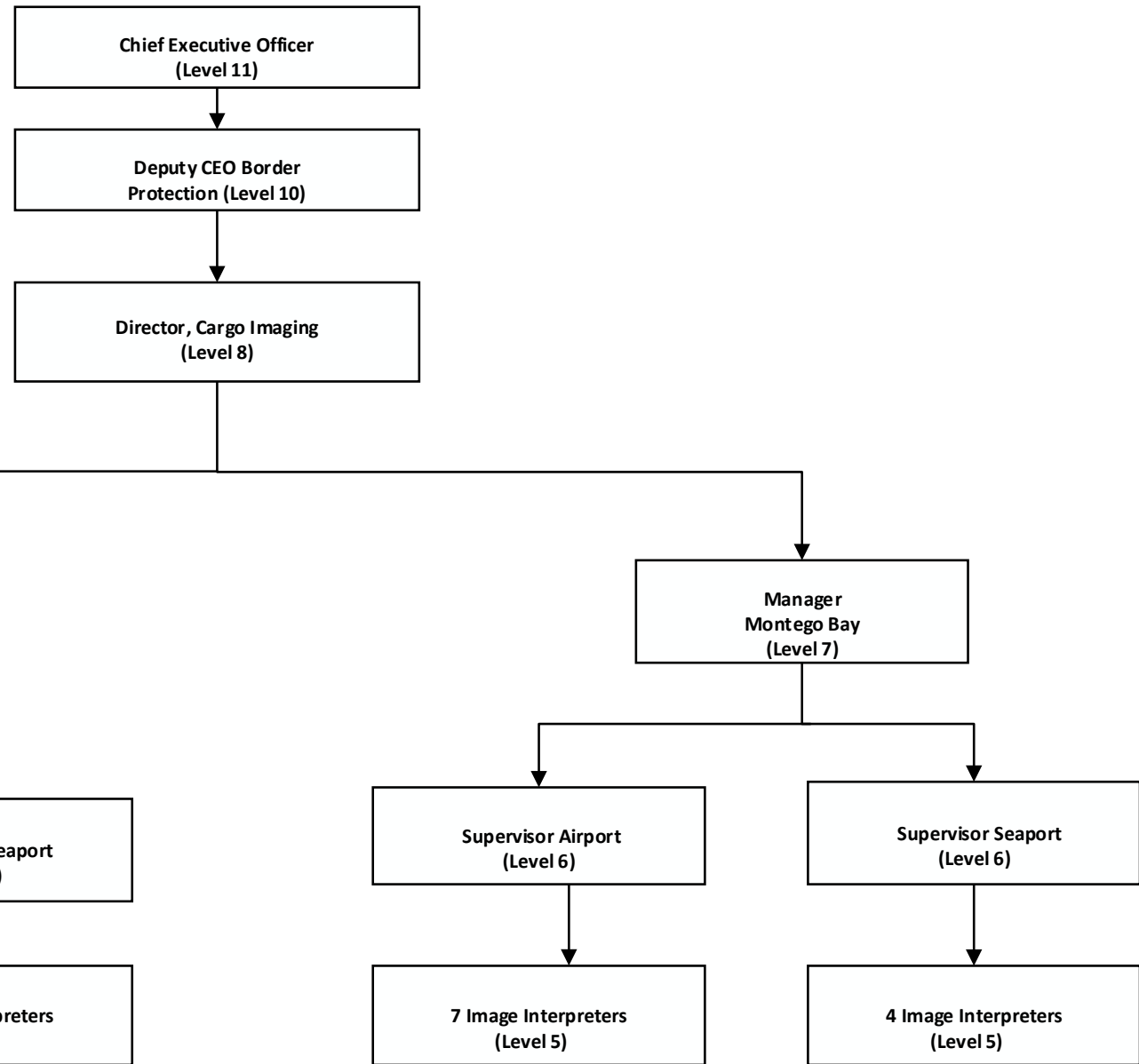
JAMAICA CUSTOMS AGENCY
BORDER PROTECTION DIVISION
RISK MANAGEMENT BRANCH



Revised Structure

Updated May 4, 2021

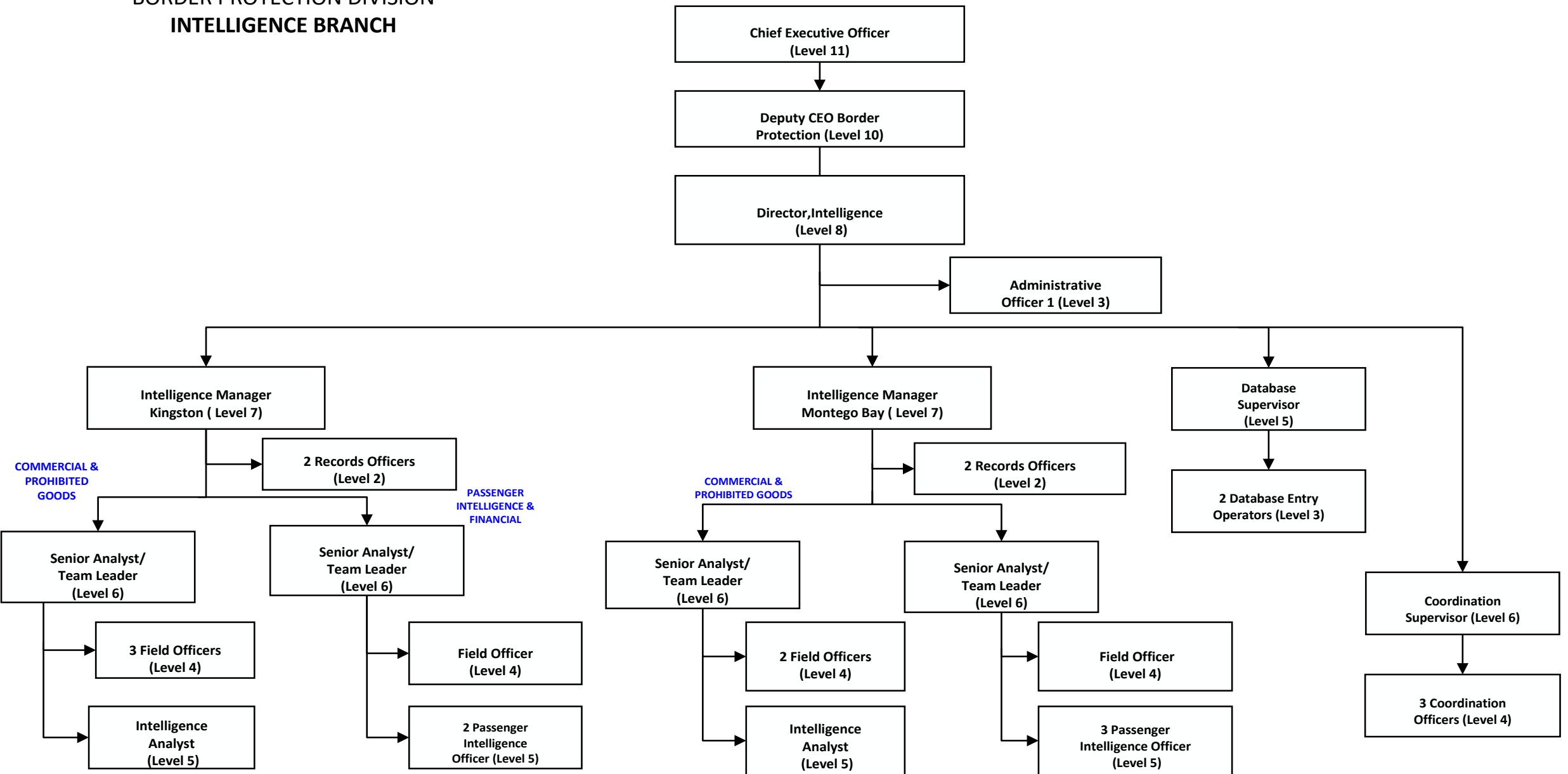
JAMAICA CUSTOMS AGENCY
BORDER PROTECTION DIVISION
CARGO IMAGING BRANCH



Revised Structure

Updated May 4, 2021

JAMAICA CUSTOMS AGENCY
 BORDER PROTECTION DIVISION
INTELLIGENCE BRANCH

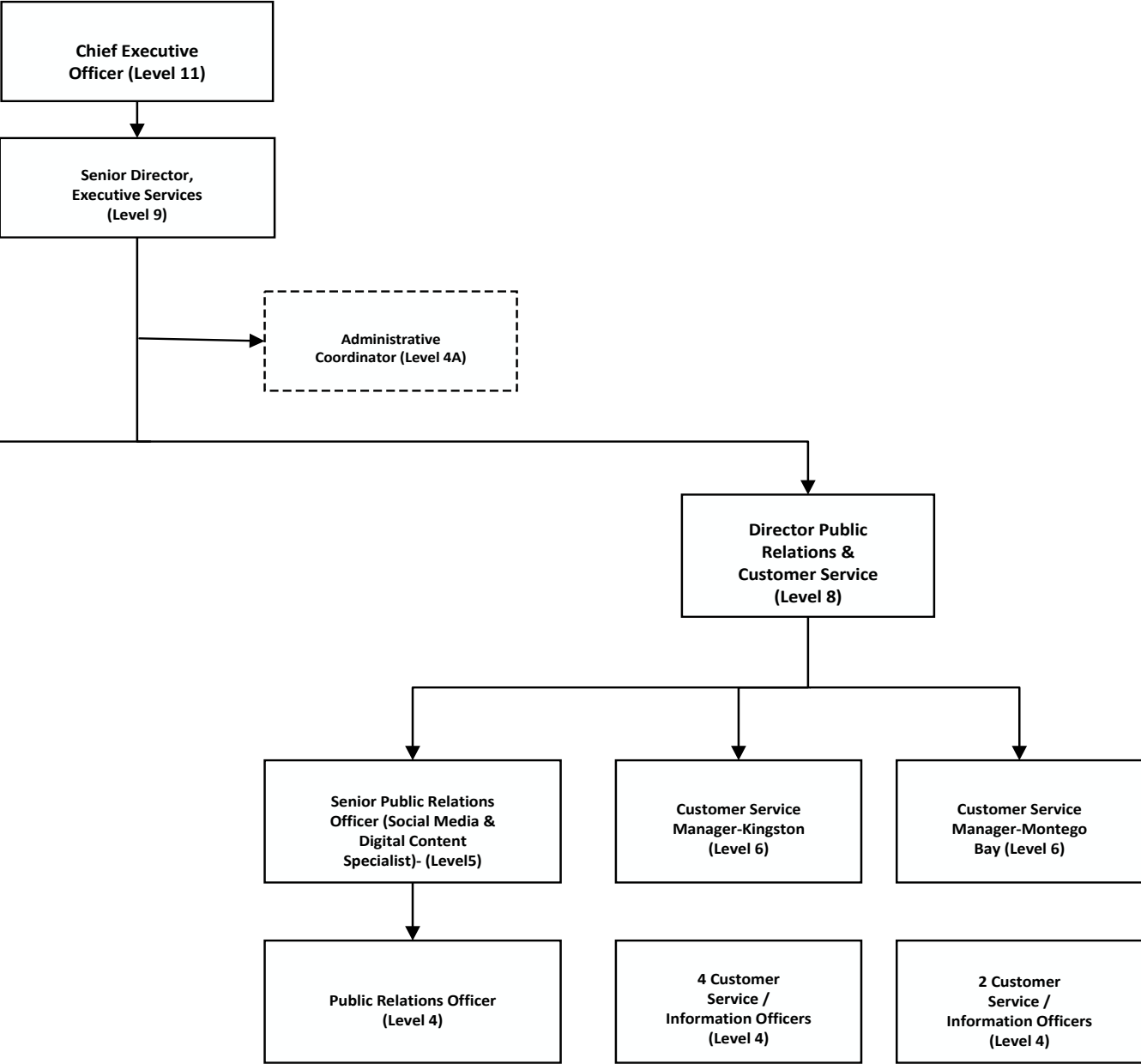


Revised Structure

Updated May 4, 2021

**JAMAICA CUSTOMS AGENCY
EXECUTIVE SERVICES DIVISION**

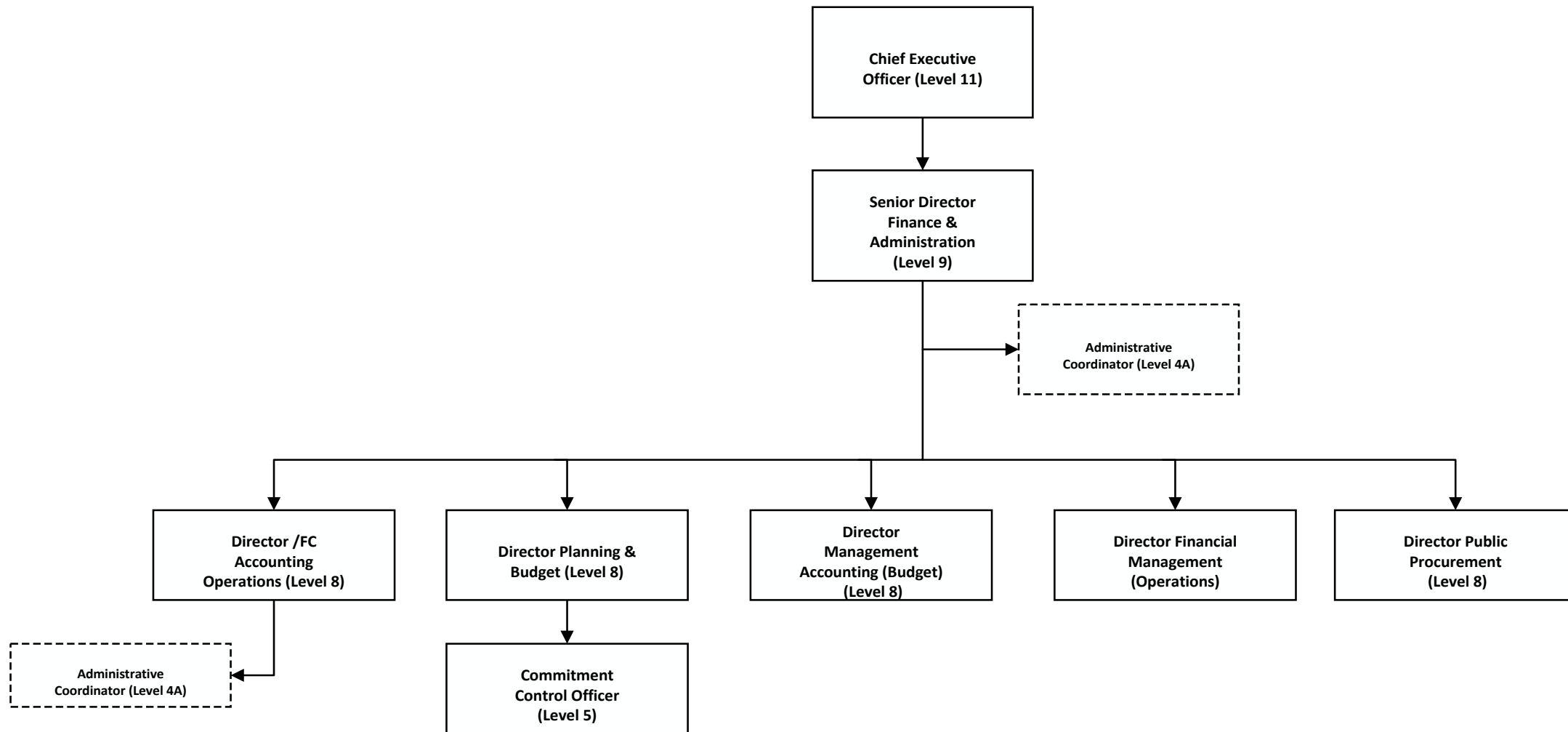
w.e.f November 16, 2020



Revised Structure

Updated May 4, 2021

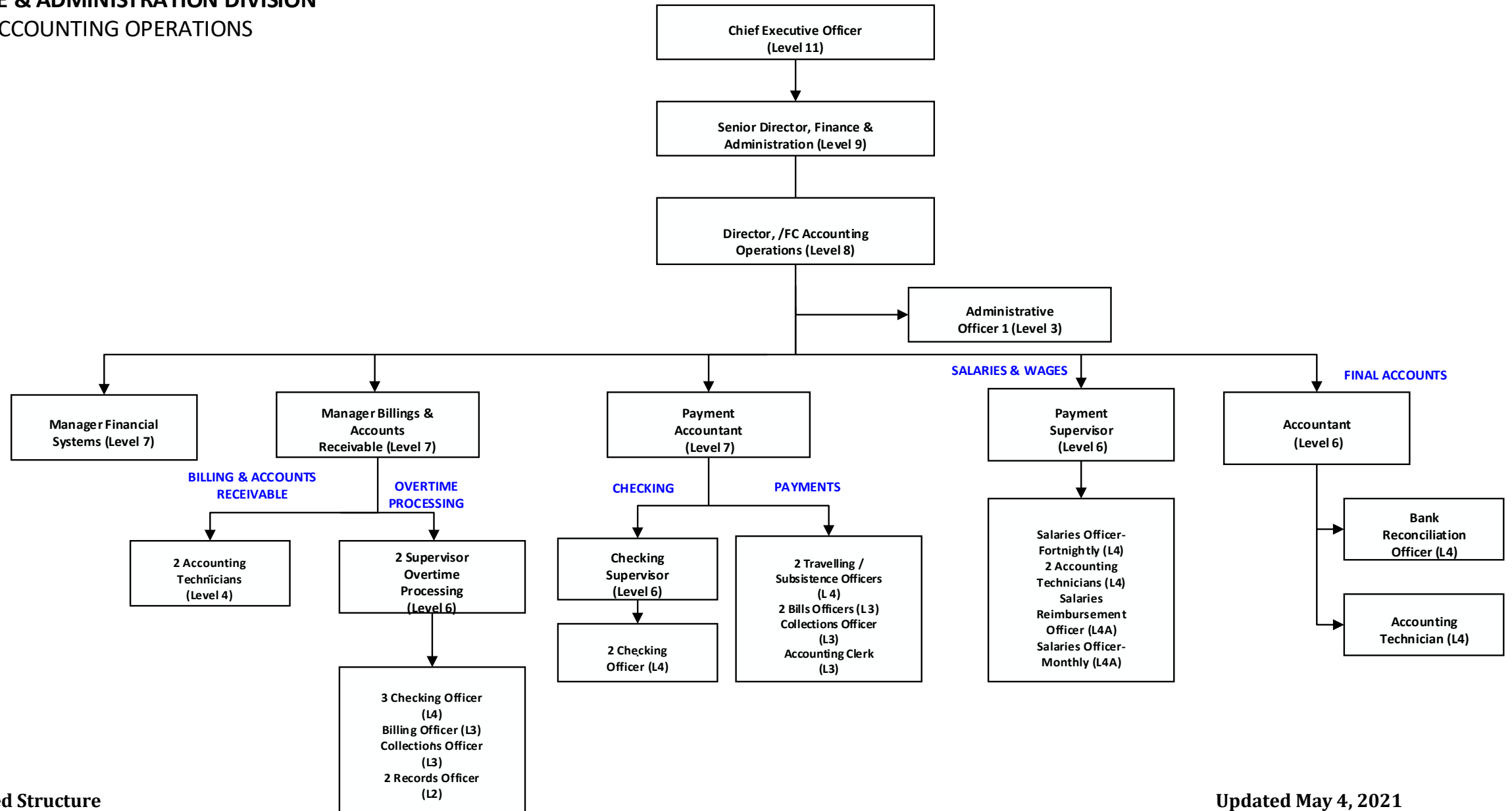
JAMAICA CUSTOMS AGENCY
FINANCE & ADMINISTRATION DIVISION
Financial Operations



Revised Structure

Updated May 4, 2021

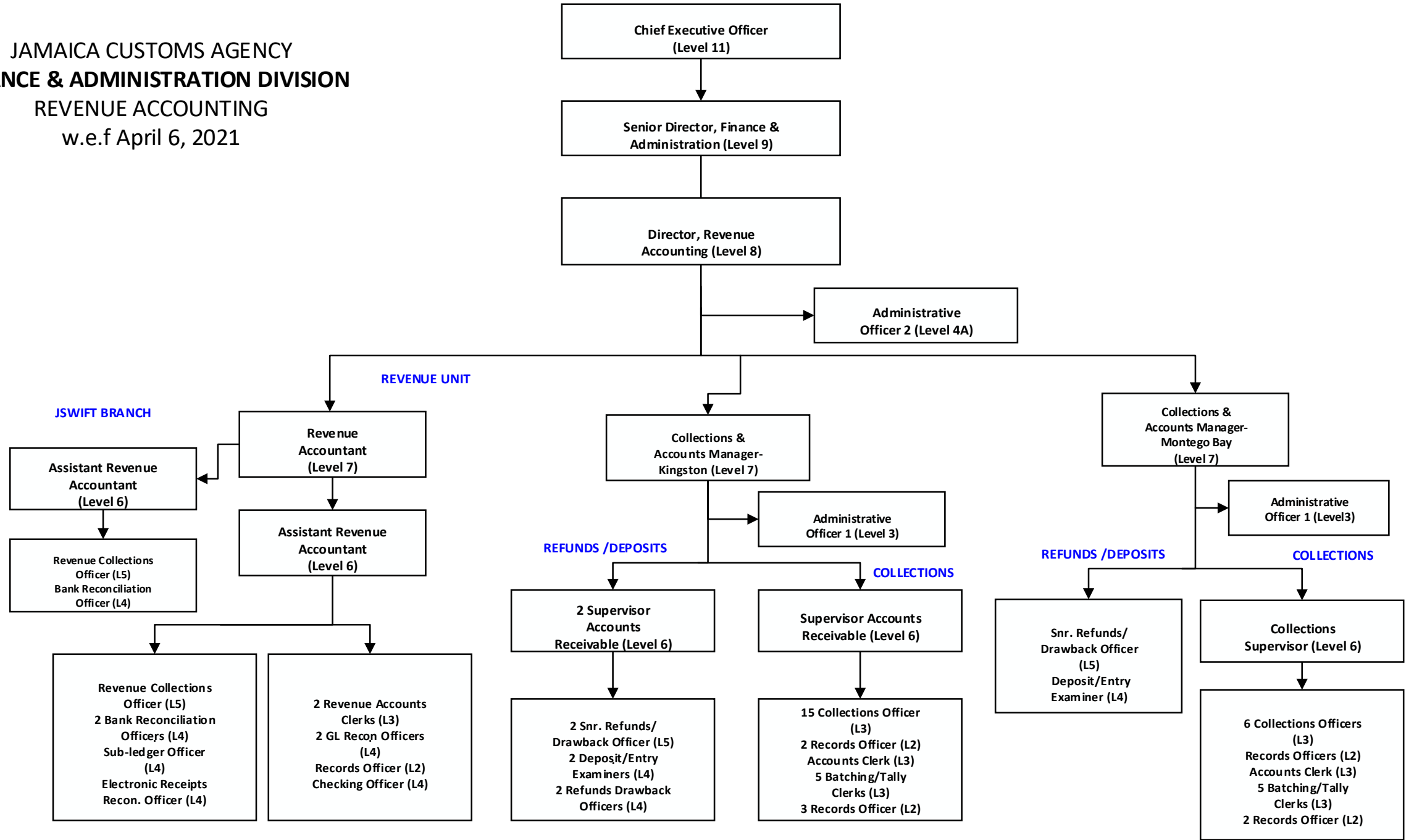
JAMAICA CUSTOMS AGENCY
FINANCE & ADMINISTRATION DIVISION
 ACCOUNTING OPERATIONS



Revised Structure

Updated May 4, 2021

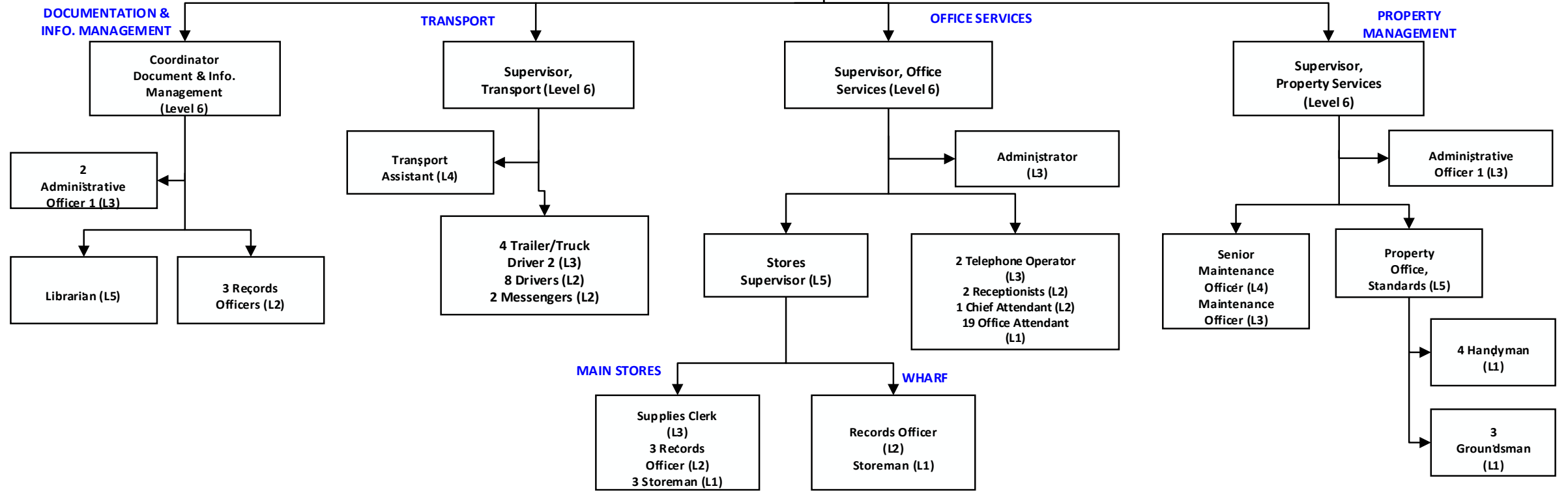
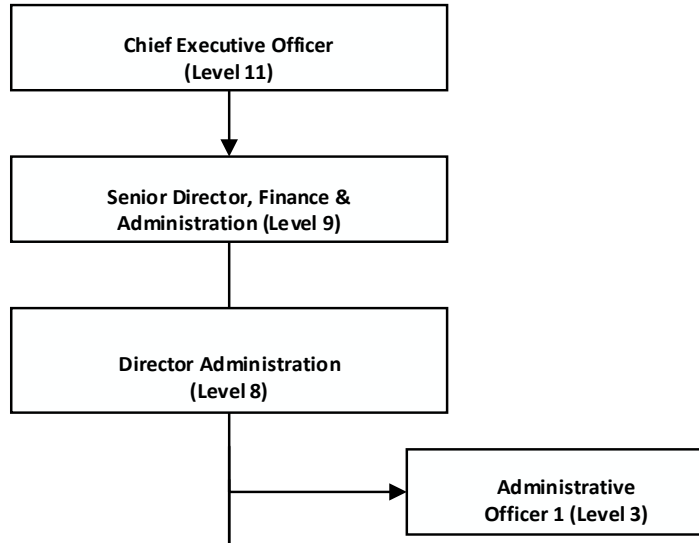
JAMAICA CUSTOMS AGENCY
FINANCE & ADMINISTRATION DIVISION
 REVENUE ACCOUNTING
 w.e.f April 6, 2021



Revised Structure

Updated May 4, 2021

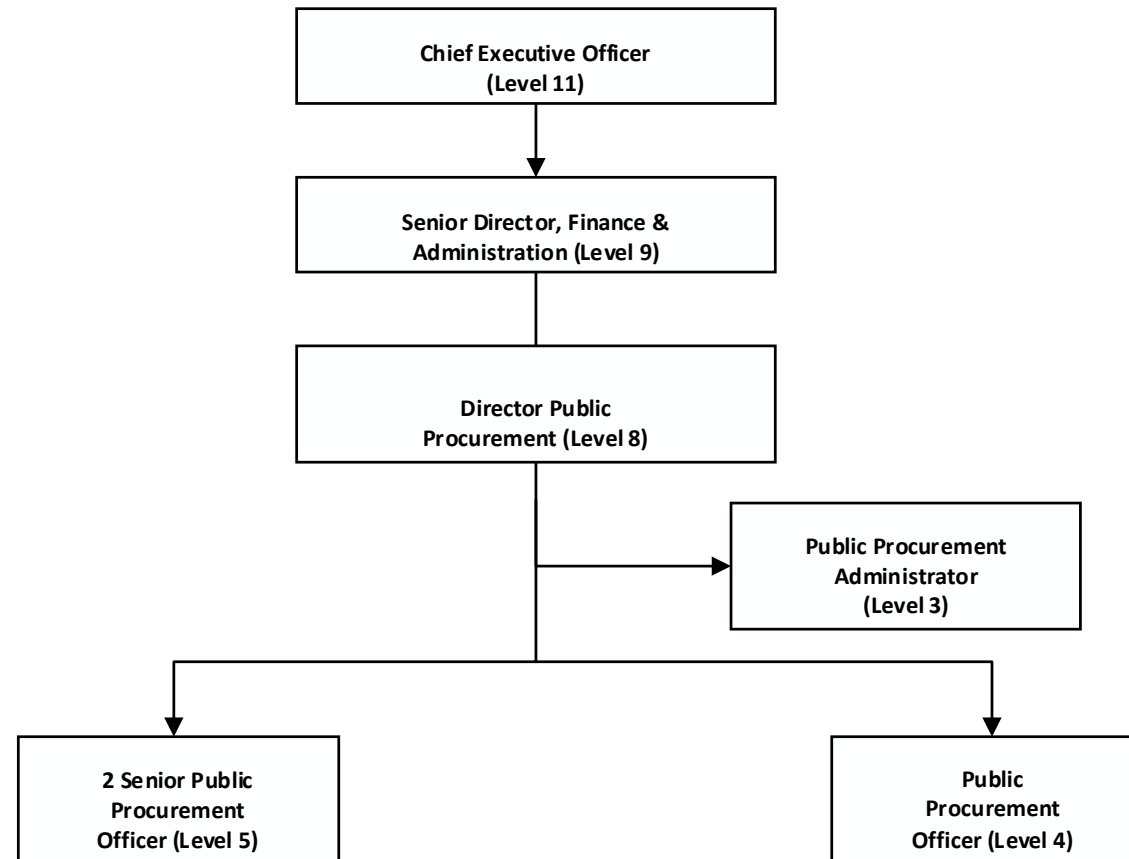
JAMAICA CUSTOMS AGENCY
FINANCE & ADMINISTRATION DIVISION
 ADMINISTRATION BRANCH



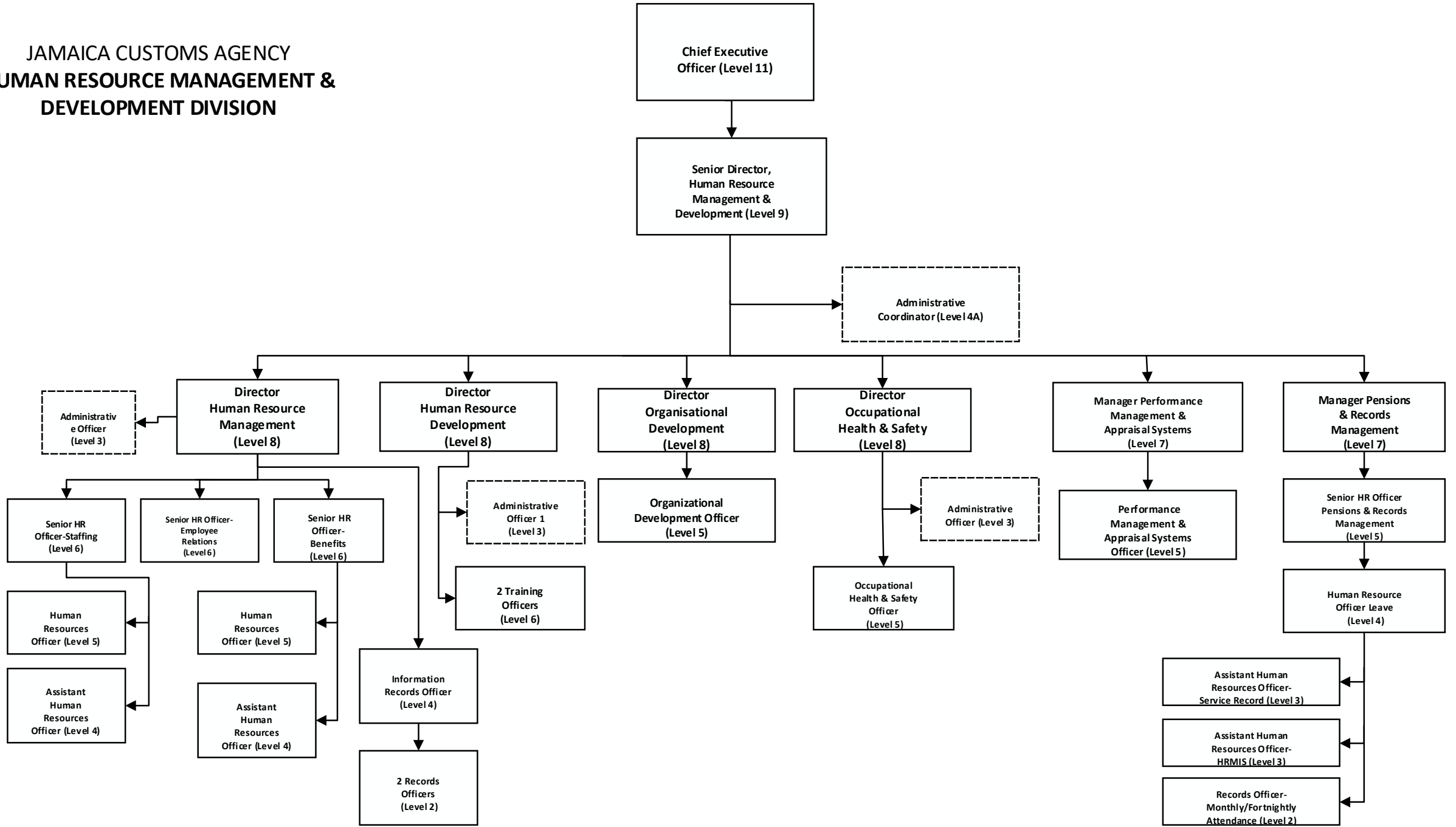
Revised Structure

Updated May 4, 2021

JAMAICA CUSTOMS AGENCY
FINANCE & ADMINISTRATION DIVISION
PUBLIC PROCUREMENT BRANCH
W.E.F DECEMBER 10, 2018



**JAMAICA CUSTOMS AGENCY
HUMAN RESOURCE MANAGEMENT &
DEVELOPMENT DIVISION**

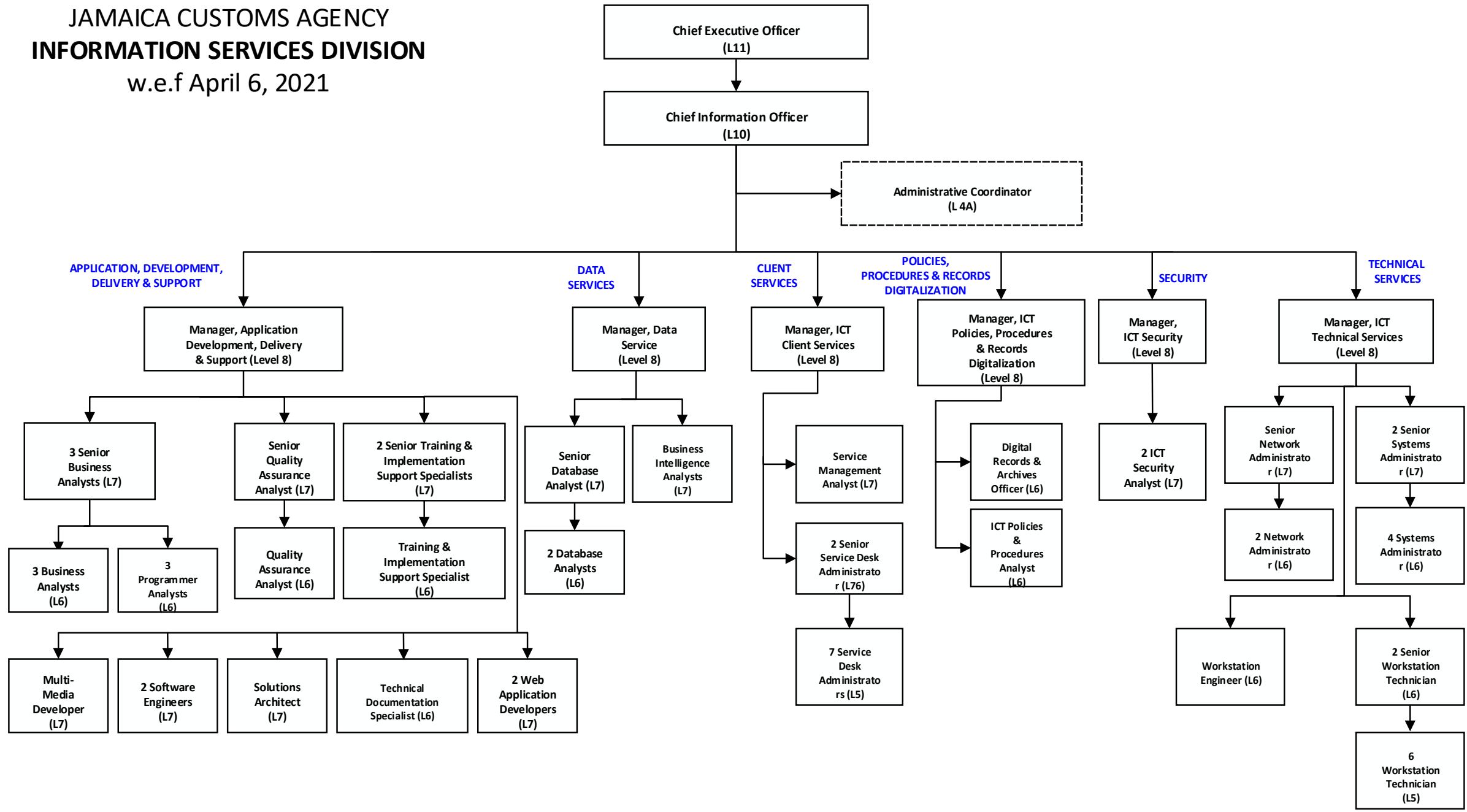


Revised Structure

Updated May 4, 2021

**JAMAICA CUSTOMS AGENCY
INFORMATION SERVICES DIVISION**

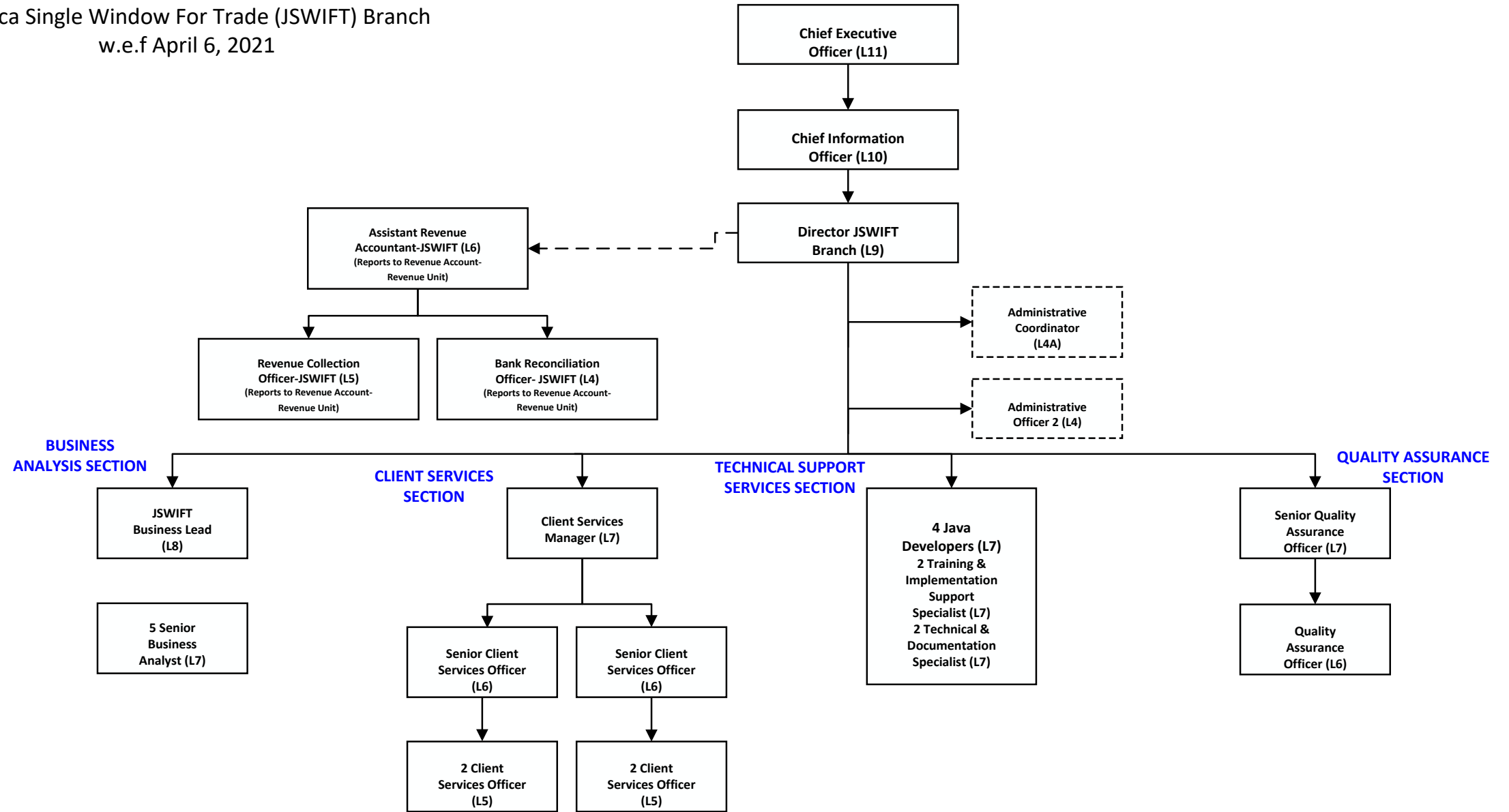
w.e.f April 6, 2021



Revised Structure

Updated May 4, 2021

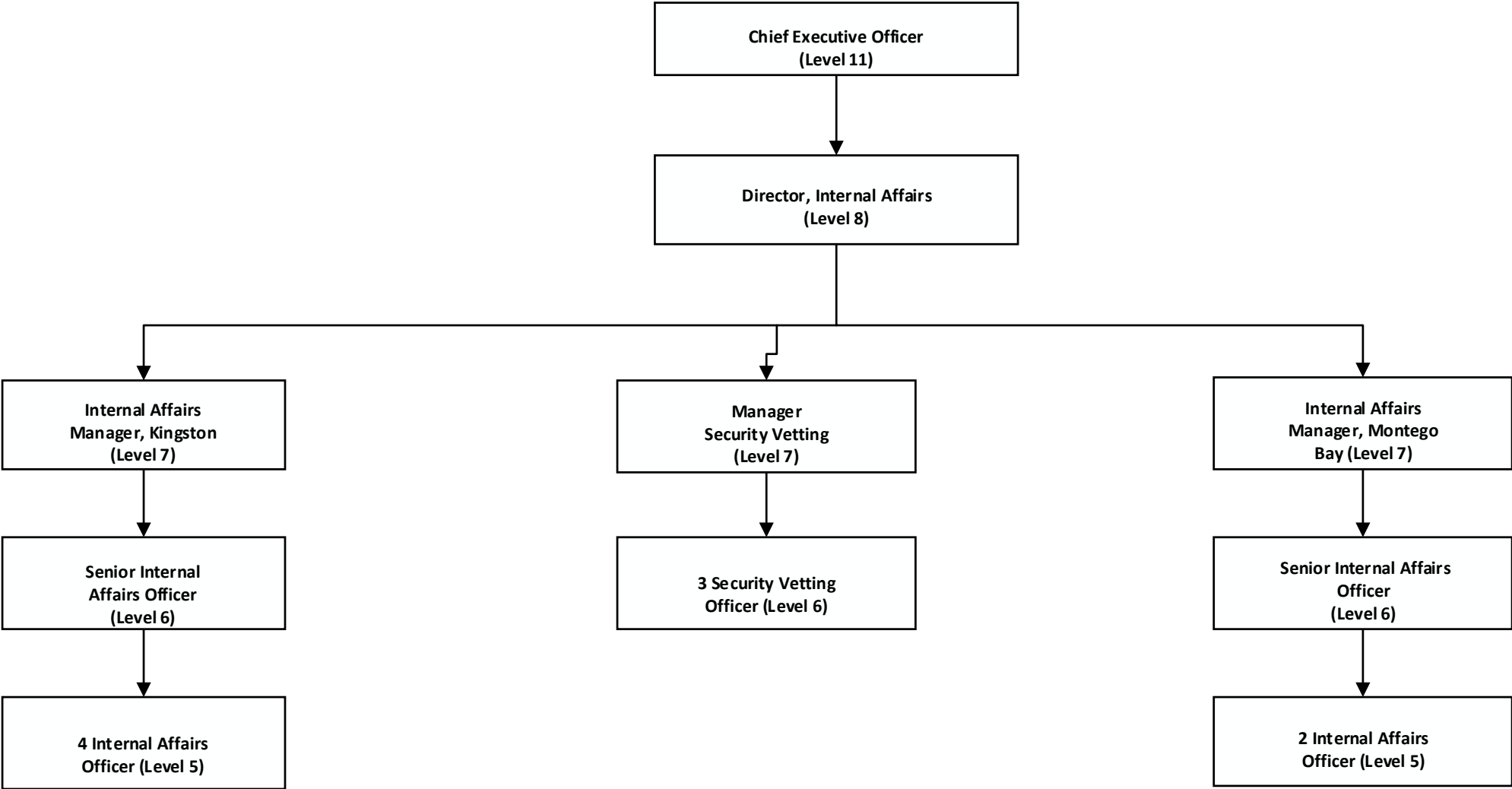
JAMAICA CUSTOMS AGENCY
INFORMATION SERVICES DIVISION
 Jamaica Single Window For Trade (JSWIFT) Branch
 w.e.f April 6, 2021



Revised Structure

Updated May 4, 2021

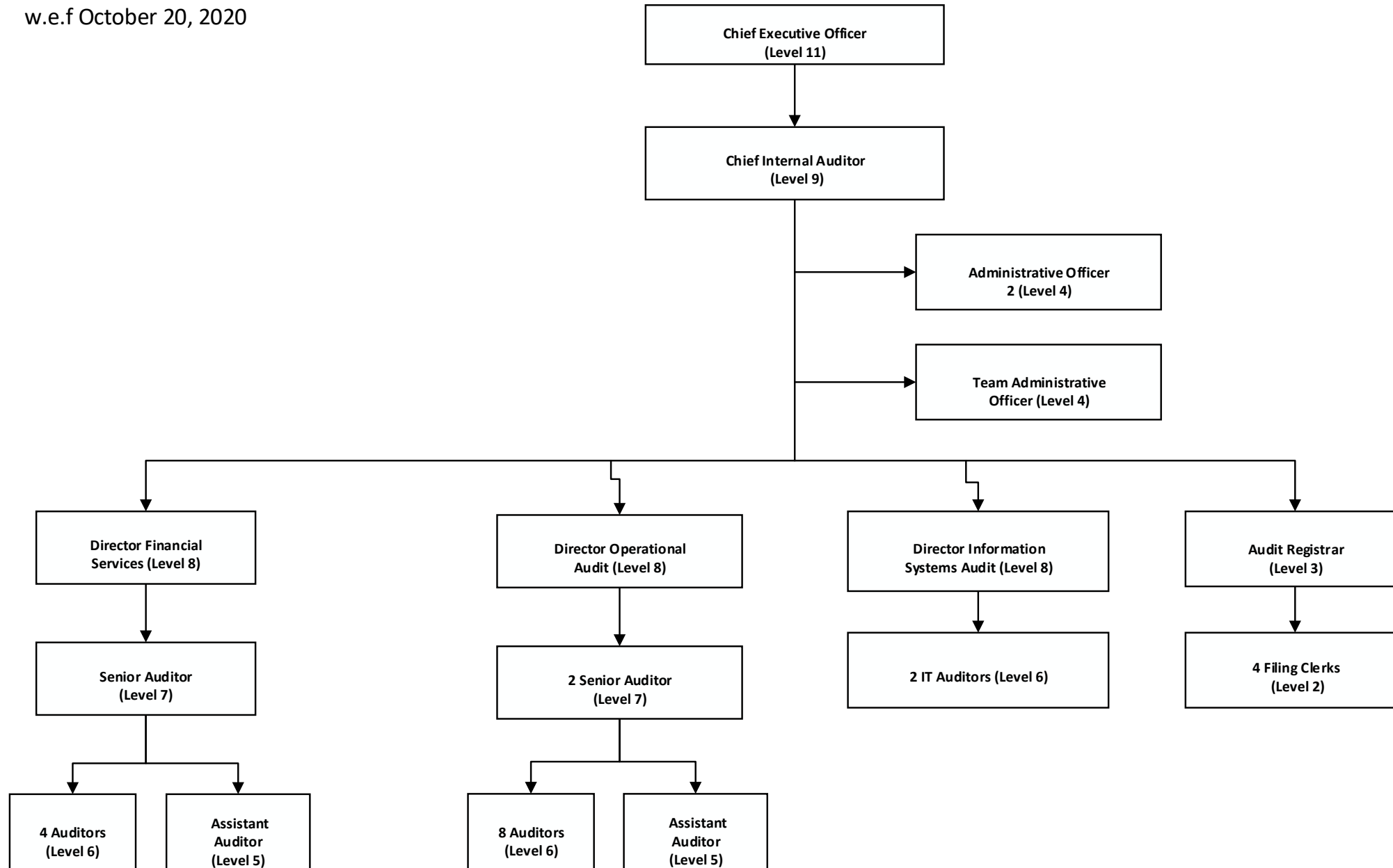
**JAMAICA CUSTOMS AGENCY
INTERNAL AFFAIRS DIVISION**



Revised Structure

Updated May 4, 2021

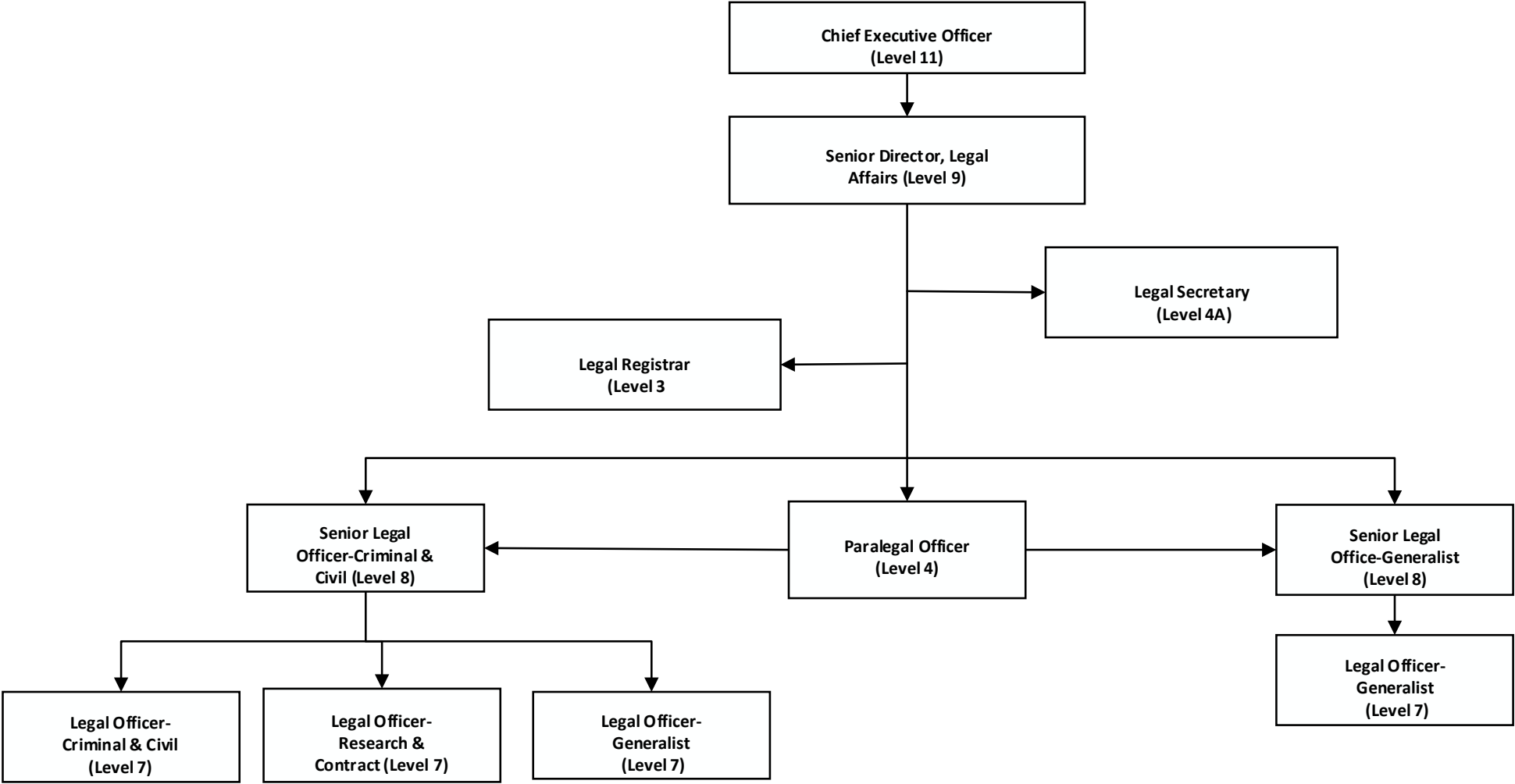
JAMAICA CUSTOMS AGENCY
INTERNAL AUDIT DIVISION
w.e.f October 20, 2020



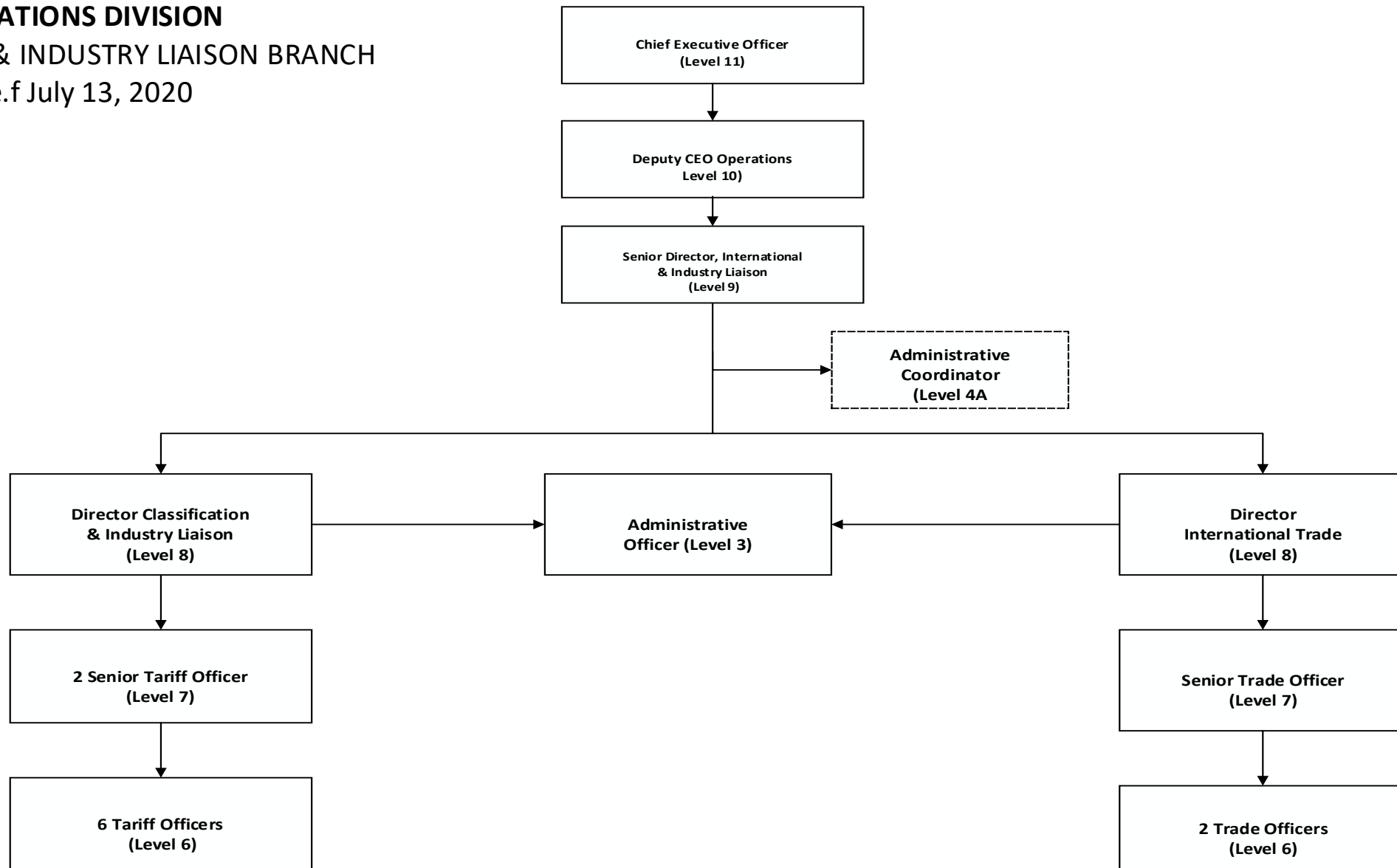
Revised Structure

Updated May 4, 2021

JAMAICA CUSTOMS AGENCY
LEGAL DIVISION
w.e.f January 20, 2020



JAMAICA CUSTOMS AGENCY
OPERATIONS DIVISION
INTERNATIONAL & INDUSTRY LIAISON BRANCH
w.e.f July 13, 2020



Revised Structure

Updated May 4, 2021

**JAMAICA CUSTOMS AGENCY
OPERATIONS DIVISION
CENTRAL OPERATIONS**

**Chief Executive Officer
(L11)**

**Deputy CEO Operations
(L10)**

**Senior Director Central
Operations (L9)**

**Administrative Coordinator
(L 4A)
Administrative Officer 2 (L4)**

**Administrative
Coordinator (L4A)**

**AUTHORIZED ECONOMIC
OPERATOR W.E.F 04/07/16**

INCENTIVES UNIT

**COLLECTION &
DELINQUENCY
04/07/16**

**PRIVATE BONDED
WAREHOUSES**

**Director Post
Cleanace Audit (L8)**

**Administrativ
e Officer 1
(L3)**

**Manager
Authorized
Economic
Operators (L7)**

**Administrativ
e Officer 1 (L3)**

**Manager Incentives &
Returning Residents (L7)**

**Administrative
Officer 1 (L3)**

VALUATION

**Director
Valuation (L8)**

**Administrative
Officer 1 (L3)**

**Manager Collection
& Delinquency (L7)**

**Manager Private
Bonded Warehouses
(L7)**

**2 Managers
Kingston (L7)**

**Manager
Montego Bay
(L7)**

**2 Snr. Account
Officer/Supervisor
AEO (L6)
8 Account Officer
AEO (L5)**

**RETURNING
RESIDENTS**

**1 Supervisor (L6)
1 Snr. Customs Officer
(L5)
1 Customs Officer (L4)
1 Customs/Write Off
Officer (L4)
1 Data Entry Operator (L3)
1 Records Officer (L2)**

**Manager, Valuation
(L7)**

**2 Supervisors (L6)
8 Snr. Customs
Officer (L5)
1 Records Officer
(L2)**

**1 Supervisor (L6)
10 Customs Officers
(L4)
4 Records Officer
(L2)**

**8 Supervisors
(L6)
32 Auditors
(L5)
2 Records
Officer (L2)**

**2 Supervisors
(L6)
8 Auditors (L5)
1 Records
Officer (L2)**

**2 Supervisor (L6)
3 Snr. Customs/
Incentives Officer (L5)
5 Customs/Incentives
Officer (L4)
1 Records Officer (L2)**

3 Supervisors (L6)

**5 Research Officers
(L4)
12 Valuation
Officers (L4)
2 Data Entry
Operators (L3)
2 Records Officer
(L2)**

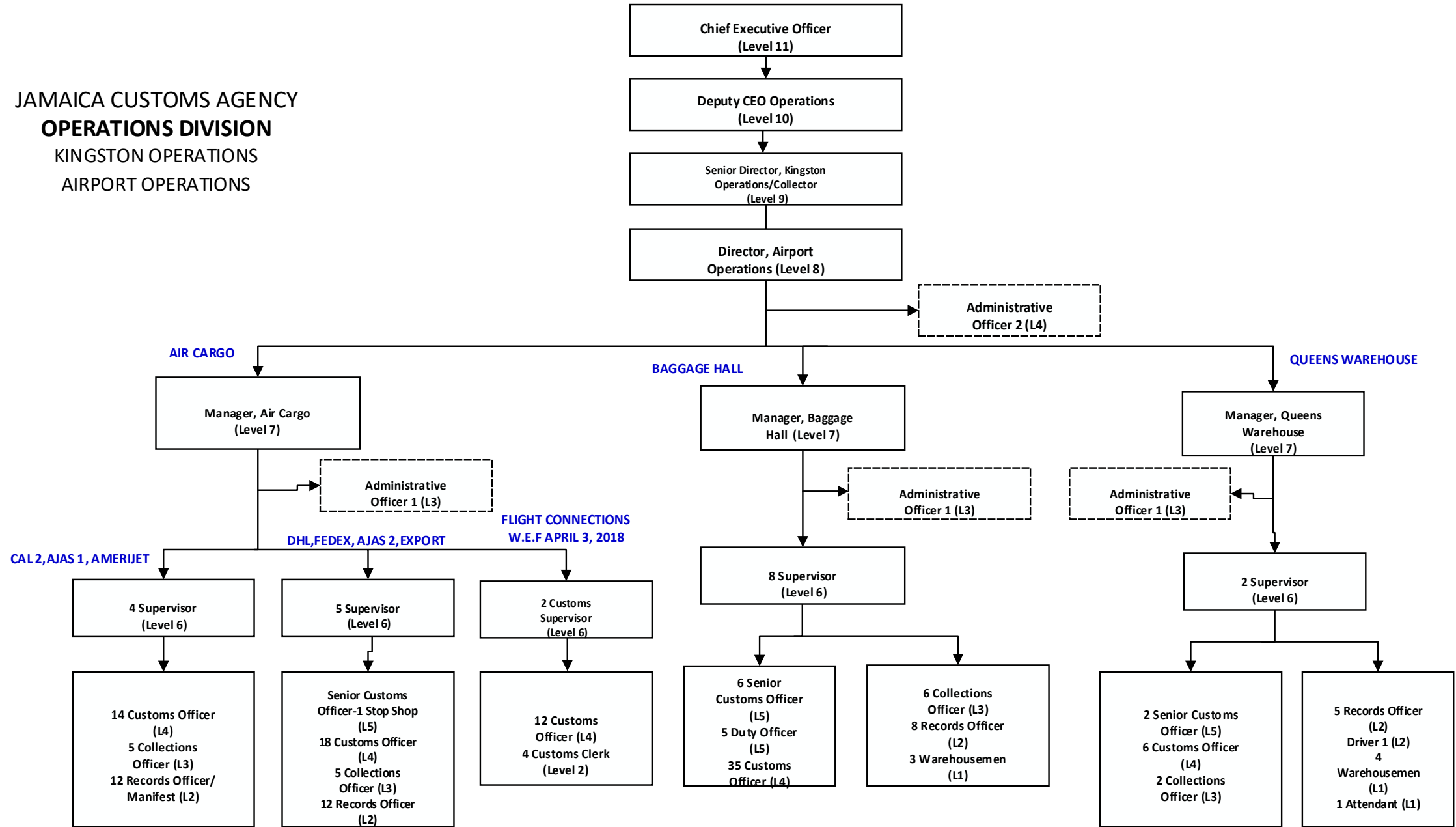
**INCENTIVES
MONITORING
MONTEGO BAY**

**1 Supervisor (L6)
1 Snr. Customs/
Incentives Officer (L5)
3 Customs/Incentives
Officer (L4)
1 Records Officer (L2)**

Revised Structure

Updated May 4, 2021

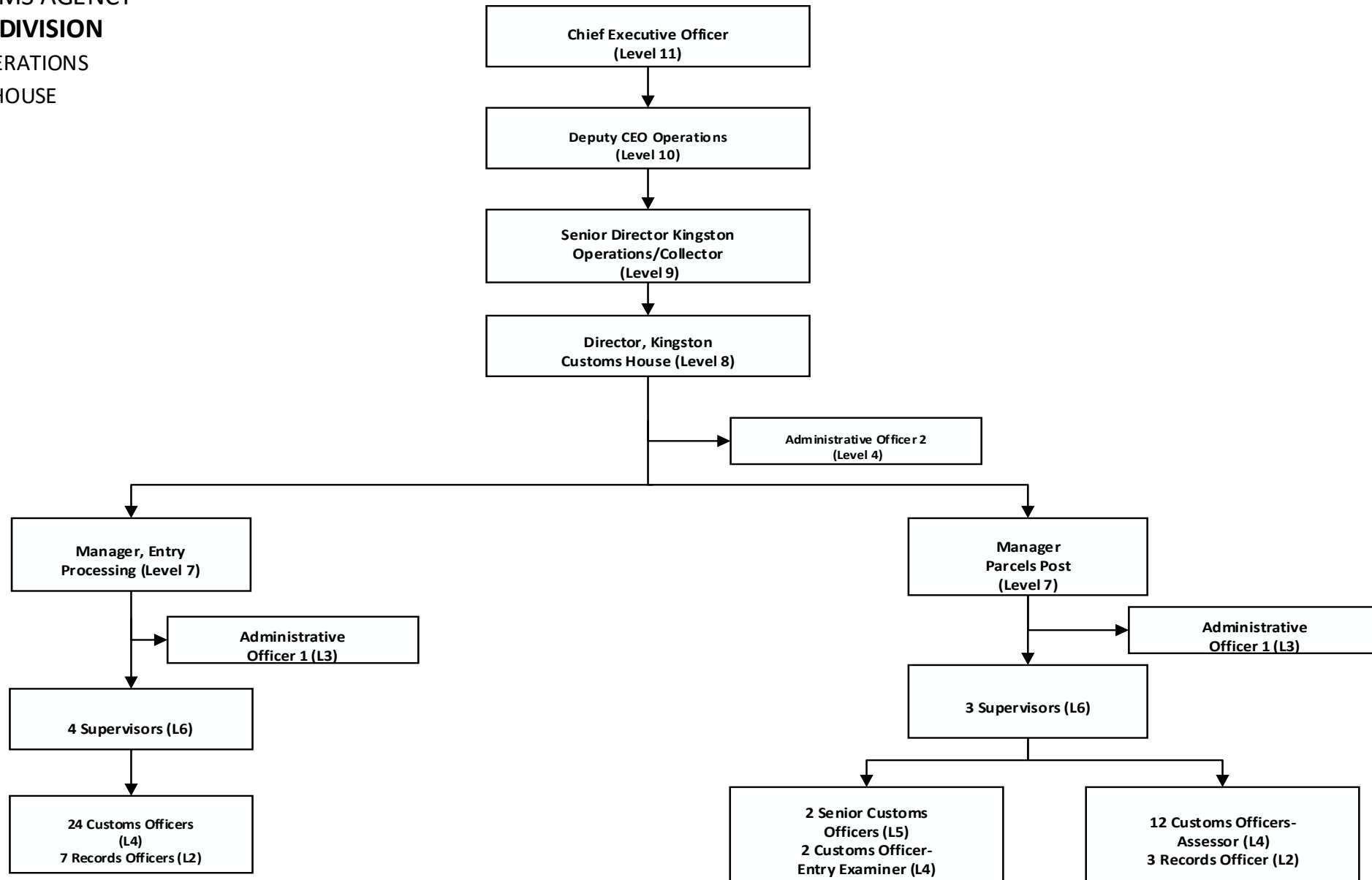
JAMAICA CUSTOMS AGENCY
OPERATIONS DIVISION
 KINGSTON OPERATIONS
 AIRPORT OPERATIONS



Revised Structure

Updated May 4, 2021

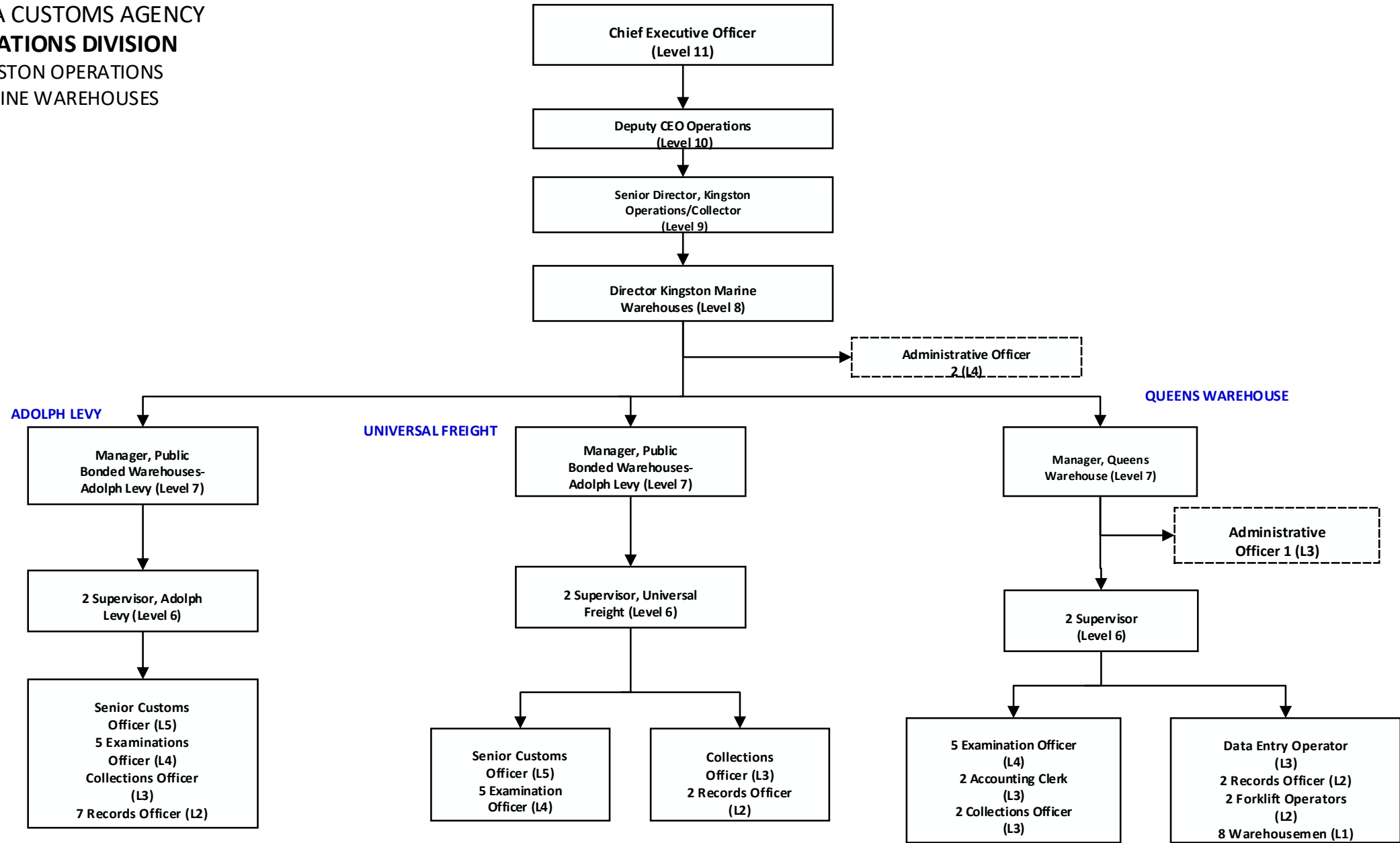
JAMAICA CUSTOMS AGENCY
OPERATIONS DIVISION
 KINGSTON OPERATIONS
 CUSTOMS HOUSE



Revised Structure

Updated May 4, 2021

JAMAICA CUSTOMS AGENCY
OPERATIONS DIVISION
 KINGSTON OPERATIONS
 MARINE WAREHOUSES



Revised Structure

Updated May 4, 2021

JAMAICA CUSTOMS AGENCY
OPERATIONS DIVISION
 KINGSTON OPERATIONS
 MARINE WHARVES

Chief Executive Officer
(Level 11)

Deputy CEO Operations
(Level 10)

Senior Director, Kingston
Operations/Collector
(Level 9)

Director, Kingston, Marine
Wharves (Level 8)

Administrative
Officer 2 (Level 4B)

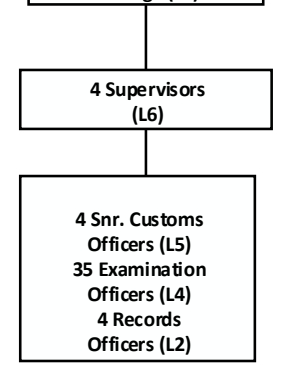
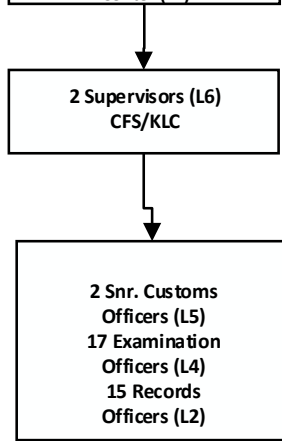
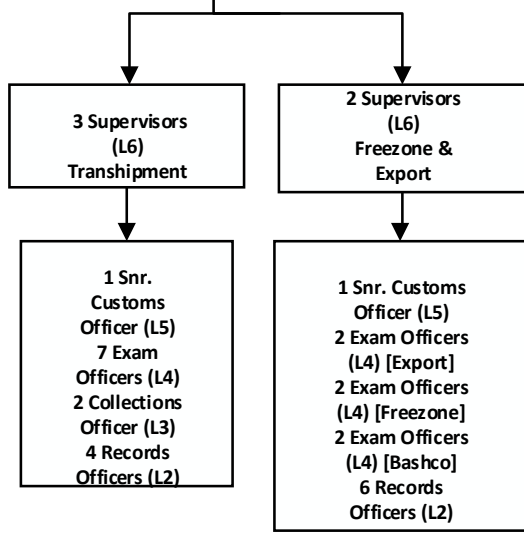
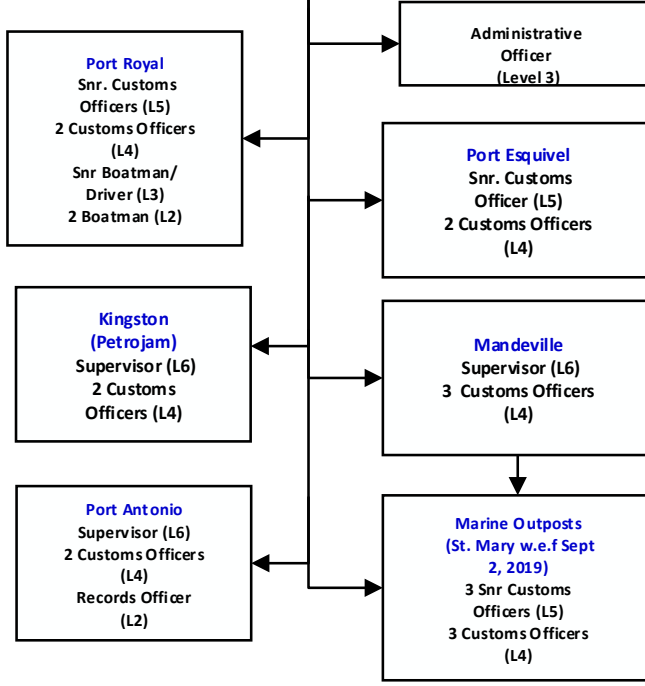
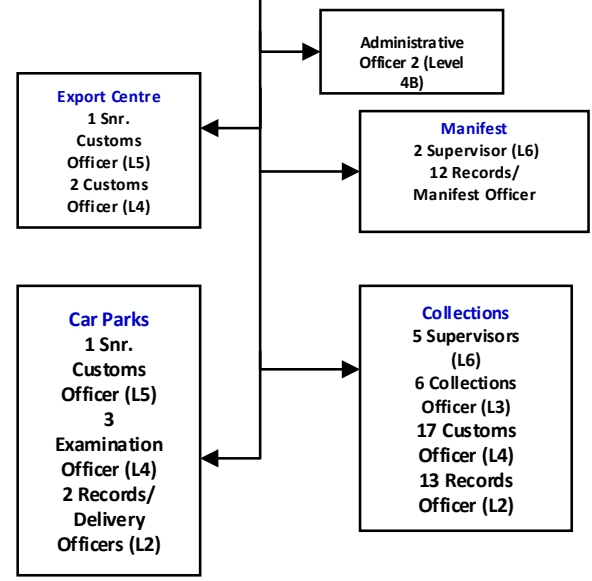
2 Managers
Kingston Wharves
(L7) [Berths 1-8]

Manager,
Sufferance
Wharves (L7)

Manager, Export
Transshipment &
Freezone (L7)

Manager, Container
Freight Station/
Kingston Logistics
Center (L7)

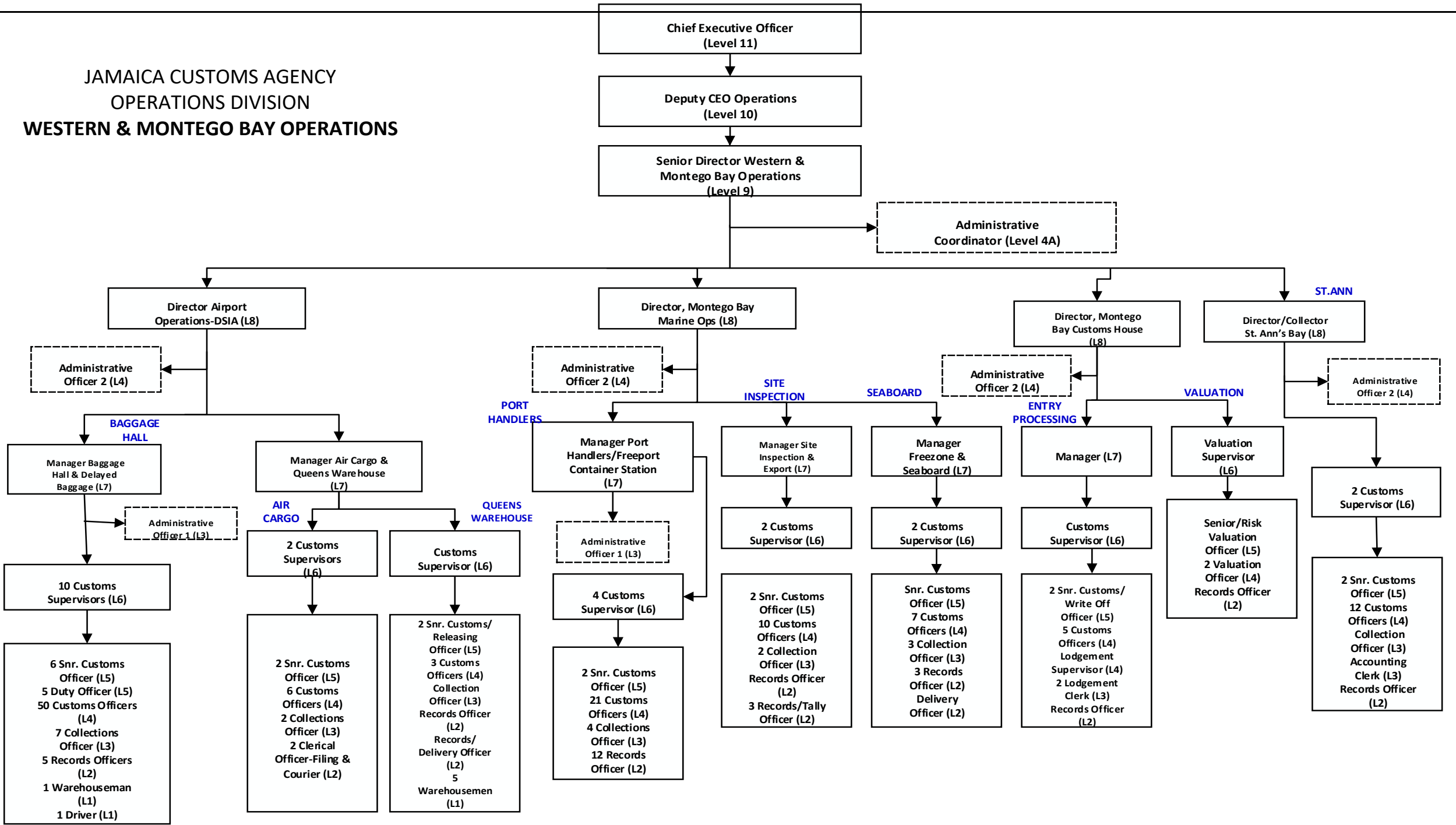
Manager
Scrap Metal,
SIU & Cold
Storage (L7)



Revised Structure

Updated May 4, 2021

**JAMAICA CUSTOMS AGENCY
OPERATIONS DIVISION
WESTERN & MONTEGO BAY OPERATIONS**



Revised Structure

Updated May 4, 2021